

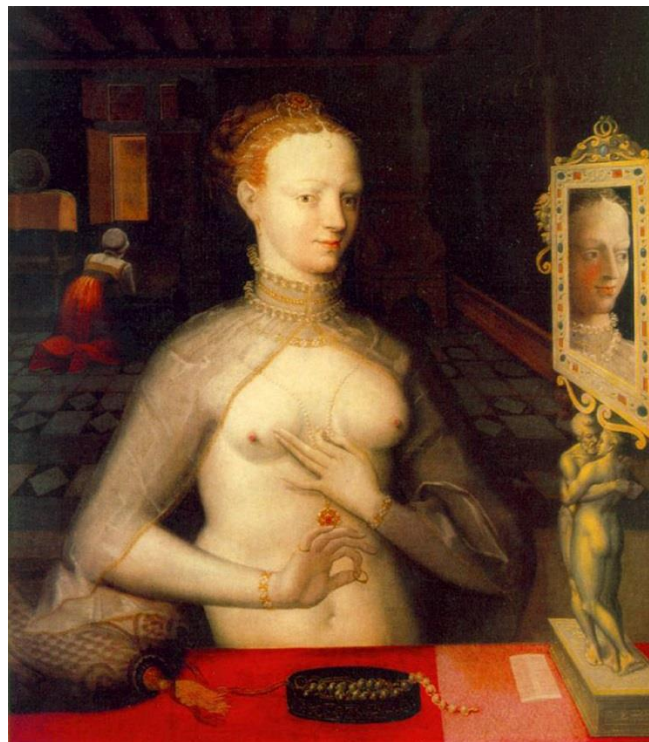
# Three-day AHRC-Research Network International Conference on 'Gender, Power and Materiality in Early Modern Europe, 1500-1800'

Plymouth University, 7-9 April 2016

RESEARCH  
WITH  
PLYMOUTH  
UNIVERSITY



Universiteit Leiden



(Diane de Poitiers, School of Fontainebleau 1590)



LUND  
UNIVERSITY



THE UNIVERSITY OF  
WESTERN AUSTRALIA

## CONFERENCE PROGRAMME

### Thursday 7 April 2016

*Arrive, Registration and Coffee, 10.00 -11.00*

**Atria A by Devonport Lecture Theatre, Portland Square Building (PSQ)**

*Welcome and 'Housekeeping', 11.00 -11.15, James Daybell and Svante Norrhem*

**Devonport Lecture Theatre, PSQ**

### **SESSION 1: 11.15-12.30, Devonport Lecture Theatre, PSQ**

James Daybell, Svante Norrhem, Nadine Akkerman, Susan Broomhall and Jacqueline Van Gent,  
'Gloved: The Gendered Power of Materiality in Early Modern English Handwear'

***Lunch 12.30-13.30, Atria A by Devonport Lecture Theatre, PSQ***

**SESSION 2: 13.30-15.00 Panels 1 and 2****Panel 1: Devotions and Possessions in Early Modern Women's Religious Communities (Chair – Svante Norrhem), Room A109, PSQ**

Roberta Anderson (Bath Spa University) 'The Visitation Records of the English Benedictine Monastery of the Assumption of Our Blessed Lady'

Elizabeth Goodwin (University of Sheffield) 'Compassionate Imagery, Agency and Materiality in Sixteenth-Century Bridgettine Convents'

Sarah Joan Moran (University of Antwerp) 'Gender and Materiality in the Tridentine Reforms: Domestic Artworks at the Antwerp Beguinage 1585-1700'

**Panel 2: Aristocratic Women and the Materiality of Power in Early and Mid-Tudor England (Chair: Nadine Akkerman), Devonport Lecture Theatre, PSQ**

Nicola Clark (Royal Holloway, University of London) 'Underground Sisterhood? The gendered commemoration of the Howard dynasty at Thetford, Framlingham and Lambeth, 1485-1559'

Helen Matheson-Pollock (Queen Mary, University of London), 'The materiality of being a noblewoman: The case of Elisabeth Parr, marchioness of Northampton and the events of Summer 1553'

Rachel Delman (University of Oxford) "'A Bed of the Salutation of Our Lady": The Virgin Mary and her Political Uses in the Early Tudor Female Household'

*Tea and Coffee, 15.00-15.15 Atria A by Devonport Lecture Theatre, PSQ*

**SESSION 3: 15.15-16.45 Panels 3 and 4****Panel 3: Gender, Households, Materials and Power in Early Modern England (Chair: James Daybell), Devonport Lecture Theatre, PSQ**

Mark Hailwood and Jane Whittle (University of Exeter) 'Of Domesticall Duties, or, Rethinking the Spatial Division of Labour in Early Modern England'

Sara Pennell (University of Greenwich) 'Pots and pans herstory? Technologies and politics of the hearth in England, c. 1650-1800'

Alison Wiggins (University of Glasgow) 'Bess of Hardwick's Account Book for 1598-1601'

**Panel 4: Texts, Accounts, and Gifts in Early Modern Convents (Chair – Jacqueline Van Gent), Room A109, PSQ**

Elizabeth A. Lehfeltdt (Cleveland State University) 'Signed and Sealed: Gender and Record Keeping in Early Modern Convents'

Emilie K. M. Murphy (National University of Ireland, Galway) 'Language and Power in an English Convent in Exile'

Edmund Wareham (University of Oxford) ‘The Power of Gingerbread: Gift-Giving in South West German Convents in the Sixteenth Century’

**SESSION 4 : 17.00-18.00 Keynote Lecture, Devonport Lecture Theatre, PSQ**

Professor Ulinka Rublack (Cambridge University), ‘Colouring Fashion’.

*Dinner at The Mission Restaurant in the Barbican, 7.30pm*

**Friday 8 April 2016 – ALL PANELS TODAY WILL BE IN THE ROLAND LEVINSKY BUILDING (RLB)**

*Tea and coffee from 08.45, Ground floor, RLB*

**SESSION 5: 9.00-10.30 Panels 5 and 6**

**Panel 5: The Materiality of Female Devotional Contemplation in Seventeenth-Century Europe (Chair – Svante Norrhem), RLB 207**

Jennifer Hillman (University of Chester) ‘A window on to the soul? Penitence & contemplation in a seventeenth-century *prie-dieu*’

Amanda Pullan (University of Lancaster) ‘Female contemplation of marital and spiritual love through the embroidered image, in early modern Britain’

Róisín Watson (Society for Renaissance Studies) ‘In search of the ‘bedrock of one’s heart’: Constructing space for female contemplation in early modern Germany’

**Panel 6: Gendering the Material Letter in Early Modern Europe (Chair: James Daybell), RLB 206**

Mel Evans (University of Leicester) ‘Reading the royal words: material identities and epistolary authority of the Tudor kings and queens’

Tessa Whitehouse (Queen Mary, University of London) ‘He will be my epistle to you’: Brokering Social Connections, Material Culture & the Epistolary Construction of Friendship’

Nadine Akkerman (Leiden University, The Netherlands), ‘The Research Potential of a Postmaster’s Chest: An Introduction to “Signed, Sealed & Undelivered’

*Tea and coffee, 10.30-10.45, Ground floor, RLB*

**SESSION 6: 10.45-12.15 Panels 7 and 8**

**Panel 7: Gift-Giving, Politics and Emotions in Early Modern Europe (Chair – Nadine Akkerman), RLB 207**

Anna Boeles Rowland (University of Oxford) ‘Hearts and Minds: the exchange of heart-shaped tokens in early Tudor London’

Jordan Lavers (University of Western Australia) ‘“The Goodness of her Gift”: the Gift Exchange of Gendered Emotions in Letters by German-speaking Aristocratic Women’

Tatyana A. Zhukova (University of Nottingham) ‘Diplomacy and the Politics of Gift-Exchange: The Diplomatic gifts of Elizabeth I to the Russian Tsars, 1566-1603’

**Panel 8: Clothing, Power and Agency in Early Modern Europe (Chair – Susan Broomhall), RLB 206**

Sadie Harrison (University College London) ‘Clothing, Credibility, and Agency in the Image of the Salonnière’

Fabian Persson (Linnaeus University, Sweden) ‘Carrying Your Power On Your Sleeve: Wearable Symbols of Power at the Early Modern Court’

Rosanne Waine (Bath Spa University) ‘“Women dressed in tartan gowns and white ribbands”: The Sartorial Politics of Female Jacobitism’

*Lunch, 12.15-13.00, Ground floor, RLB*

**SESSION 7: 13.00-14.30 Panels 9 and 10**

**Panel 9: Portraits, Dress and the Politics of Masculinity in Early Modern England and France (Chair – Jacqueline Van Gent), RLB 207**

Goran Stanivukovic (Saint Mary’s University, Canada) ‘Portrait Miniature Painting and Networks of Masculinity in Late Elizabethan and Jacobean England’

Giulia Mari (Kings College, University of London) ‘Painting Masculinity: legs, leg-wear, and Marcus Gheeraerts’ portrait of Captain Thomas Lee’

Meaghan Walker (University of Alberta, Canada) ‘Dressing the Royal Marines: Masculinity, Discipline, and Uniform Subordination during the French Revolutionary and Napoleonic Wars’

**Panel 10: Queenship, Ceremony and Power in Early Modern England (Chair – Nadine Akkerman), Lecture Theatre 2, Ground floor, RLB**

Peter Hinds (Plymouth University) ‘Charles II and Catherine of Braganza: New Perspectives on the Royal Marriage of 1662’

Anna M. Duch (University of York) ‘From Birth til Death: Royal Ceremony in the Life of Elizabeth of York, Queen of England’

Julie Farguson (University of Oxford) ‘Queen Anne and the Order of the Garter: the Materiality of Military Queenship, 1702-1714’

**Workshop 1: Early Career Workshop Run by Angela McShane (Victoria and Albert Museum), ‘Methodologies for working with Material Culture’, RLB 206**

*Tea and coffee, 14.30-15.00, Ground floor, RLB*

**SESSION 8: 15.00-16.00, Keynote Lecture, Lecture Theatre 2, RLB** Tara Hamling (University of Birmingham) ‘Gender Role Models and Exempla in English Domestic Decoration, 1560-1660’

*17.00 Coaches depart for Powderham Castle for dinner hosted by the Earl of Devon*

**Saturday 9 April 2016 – ALL PANELS TODAY WILL BE IN THE ROLAND LEVINSKY BUILDING (RLB)**

*Tea and coffee from 08.45, RLB 206*

**SESSION 9: 9.00-10.30 Panels 11 and 12**

**Panel 11: Objects, Power and the Politics of Display in Early Modern Europe (Chair: Susan Broomhall), RLB 207**

Rebecca Mason (University of Glasgow) ‘Patriarchy, paraphernalia and possession: marriage and material culture in early modern Scotland’

Sophie Cope (University of Birmingham) ‘Women in the sea of time: domestic dated objects in early modern England’

Adelina Modesti (La Trobe University, Australia) ‘A Grand Duchess and her Tailor: Vittoria della Rovere and her female court in the account books of Lorenzo Gabbuggiani’

**Panel 12: Gender, Power and Material Texts in Seventeenth-Century England (Chair: Nadine Akkerman), RLB 210**

Cedric Brown (University of Reading) ‘The paradoxes of gender and power in the public and private lives and writings of Sir William & Lady Temple’

Sajed Chowdhury (National University of Ireland, Galway) ‘The Metaphysics of “Making” in the Verse Miscellany of Constance Aston Fowler (c. 1635-1638)’

*Tea and coffee, 10.30-10.45, RLB 206*

**SESSION 10: 10.45-12.45 Panels 13 and 14**

**Panel 13: Authority, Religion and Property in Early Modern Europe (Chair: Elizabeth A. Leffeldt), RLB 210**

Rahel Orgis (University of Neuchâtel, Switzerland) ‘(Un)gendered Early Modern Narrators and the Assertion of Narrative Authority’

Anna Dlabáčová (Université catholique de Louvain) ‘The Distaff as a Gendered Object for Meditative Contemplation in Middle Dutch Literature’

Patricia Saldarriaga (Middlebury College, USA) ‘Spheres of God and Knowledge: Geometrizing Power in Hispanic Visual Culture’

**Panel 14: Religion, Property and Power in Early Modern Europe (Chair: Alison Wiggins), Lecture Theatre 2, Ground floor, RLB**

Anne Laurence (The Open University) ‘Women and the Material culture of Protestantism in Early modern England’

Kate M. Buning (Central Michigan University, U.S.A) ‘Women and Reformed Piety’

Susann Anett Pedersen (Norwegian University of Science and Technology (NTNU), Norway) 'Legal practices and practical solutions - Aristocratic women and property administration in late medieval Norway'

**Workshop 2: Early Career Researcher Workshop on 'Tips for Scholarly Publishing' run by Professor Merry Wiesner-Hanks, RLB 209**

*Lunch, 12.45-13.30, RLB 206*

**SESSION 11: 13.30-14.30, Keynote Lecture, Lecture Theatre 2, RLB Joanna Norman (Victoria and Albert Museum) 'The European Galleries at the V&A'**

*Tea and coffee, 14.30-14.45, RLB 206*

**SESSION 12: 14.45-16.15 Panels 15 and 16**

**Panel 15: Gender, Manuscripts and Material Practices (Chair – Nadine Akkerman), RLB 207**

Edith Snook (University of New Brunswick, Canada) 'The Materiality of Medical Practice in the Recipes and Devotional Writing of Grace Mildmay, Lady Mildmay'

Hannah Lilley (University of Kent) 'Ann Bowyer's Commonplace Practices: Interpretive Power and Material Texts'

**Panel 16: Gender, Power and Patronage in Early Modern Europe (Chair – Svante Norrhem), RLB 210**

Susan Broomhall (University of Western Australia), 'Catherine de Medici: Power by Design'

Arlette de Jesús (Duquesne University, Pittsburgh, USA) 'Saint Teresa of Ávila and the Displacement of Power: Her Letters to Phillip II'

Ewa Kociszewska (University of Oxford) 'Power, Spirituality, Luxury: The Art Patronage of Queen Marie-Louise Gonzague in the Visitation Convent in Warsaw'

**SESSION 13: 16.15-16.45: Closing Address and Comments, Professor Merry Wiesner-Hanks, Lecture Theatre 2, Ground floor, RLB**